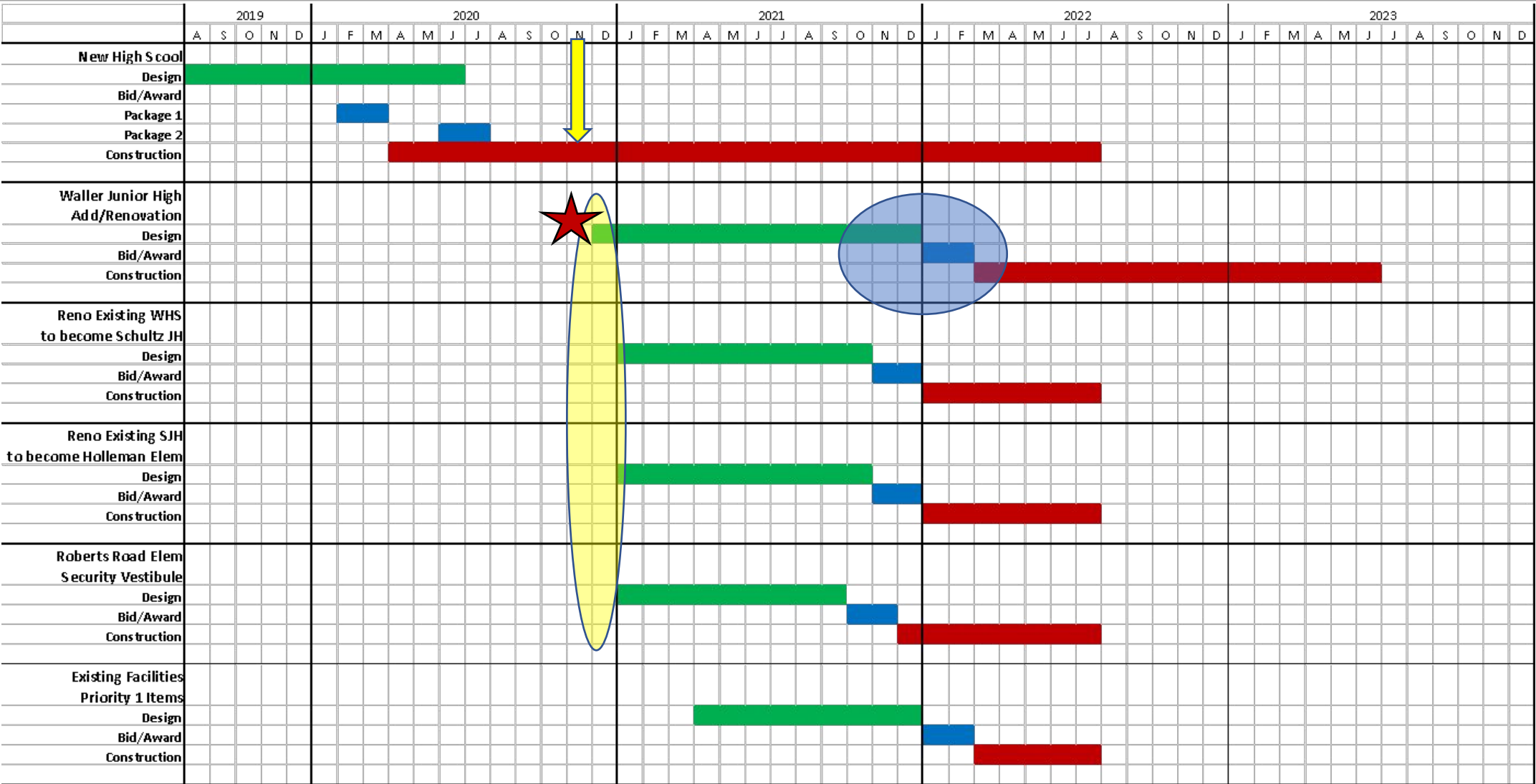


2019 BOND

November 2020 UPDATE



2019 Bond Planning Schedule



New Waller High School



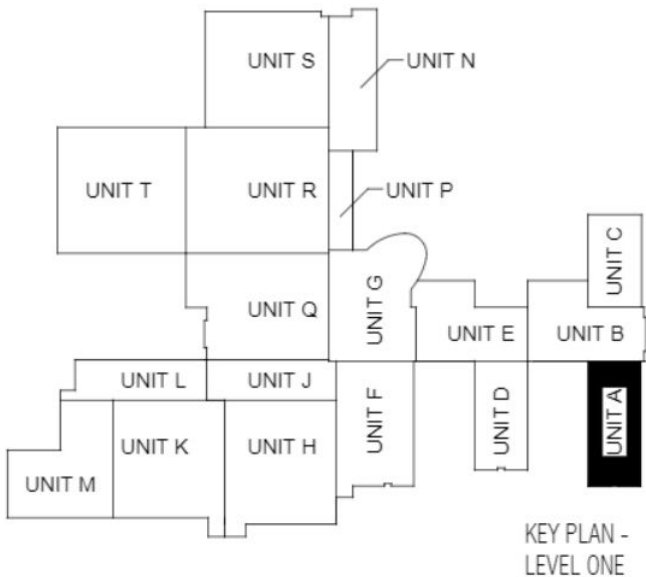
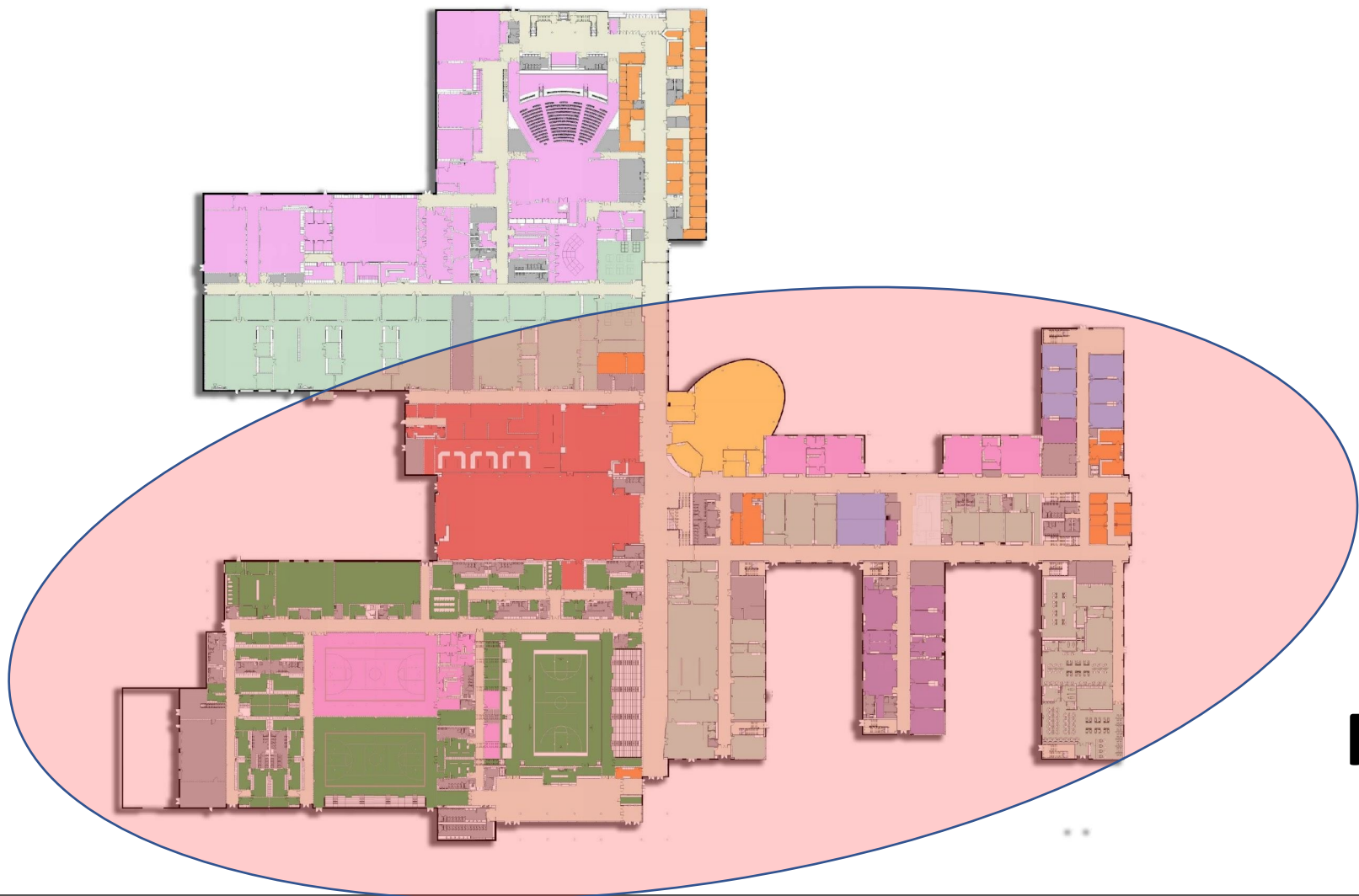
East Elevation from Student Parking

New Waller High School



East Elevation

New Waller High School



Floor Plan

Aerial Photo New Waller High School



View from the Southeast (back) of the school

Project Photos - New Waller High School

Structural Steel Erection – Large Cafeteria



Kitchen Slab and Steel, serving both cafes



Project Photos - New Waller High School



**Samples of
Handrail
And
Guardrail**

Project Photos - New Waller High School

Mechanical, Electrical, Plumbing (MEP) Rough-In continues



Project Photos - New Waller High School



Interior – Mockup Room 1904 (Area C)



Exterior with insulated sheathing in Area A

Light Gauge Metal Framing

Project Photos - New Waller High School



Track Curb and Soccer Field

Project Update - New Waller High School

Completed/Current Activities

- Over 240 days without a Lost Time Incident
- CenterPoint Underground Ductbank – 99% complete
- Building Steel Erection – 80%, complete in Areas A-Q
- Fire Proofing – ongoing in Areas E and D
- Elevated Concrete on Metal Deck – 95%
- Metal Roof Deck - ongoing, complete in Areas A-E
- Interior Electrical rough-in - ongoing
- HVAC Ductwork & Plumbing – ongoing
- Fire Sprinkler piping started in Areas A, B C
- Roofing Insulation and Iso ice & water barrier
- Exterior/ Interior Light Gauge Metal Framing- ongoing
- Track curbs in progress

Upcoming Activities

- Stormwater Pump Station, 27' deep
- Steel Erection in Areas P, R, T, S, N
- Window Frames
- Exterior Waterproofing
- Exterior Brick
- Interior CMU block walls

Thank You!

